

Centrifugal Blowers AC Single Inlet

ebmpapst

The engineer's choice

Centrifugal blowers — quiet and efficient

ebm-papst Inc. delivers a powerful line of AC single inlet, forward curved centrifugal blowers. These blowers incorporate PSC motors in a galvanized sheet steel housing to offer an efficient, quiet solution in many different applications. Their scroll shape is optimized for ideal airflow and noise. The blowers are available immediately in 115 and 230 VAC, 375-495 CFM and include the mounting flange on discharge for easy installation.

Applications for product use...

- » Air conditioners
- » Machine cooling
- » Space ventilation

Find out more about our centrifugal blower line by talking to one of our experienced sales people or applications engineers. We are changing the way air moves!

Selecting the correct capacitor...

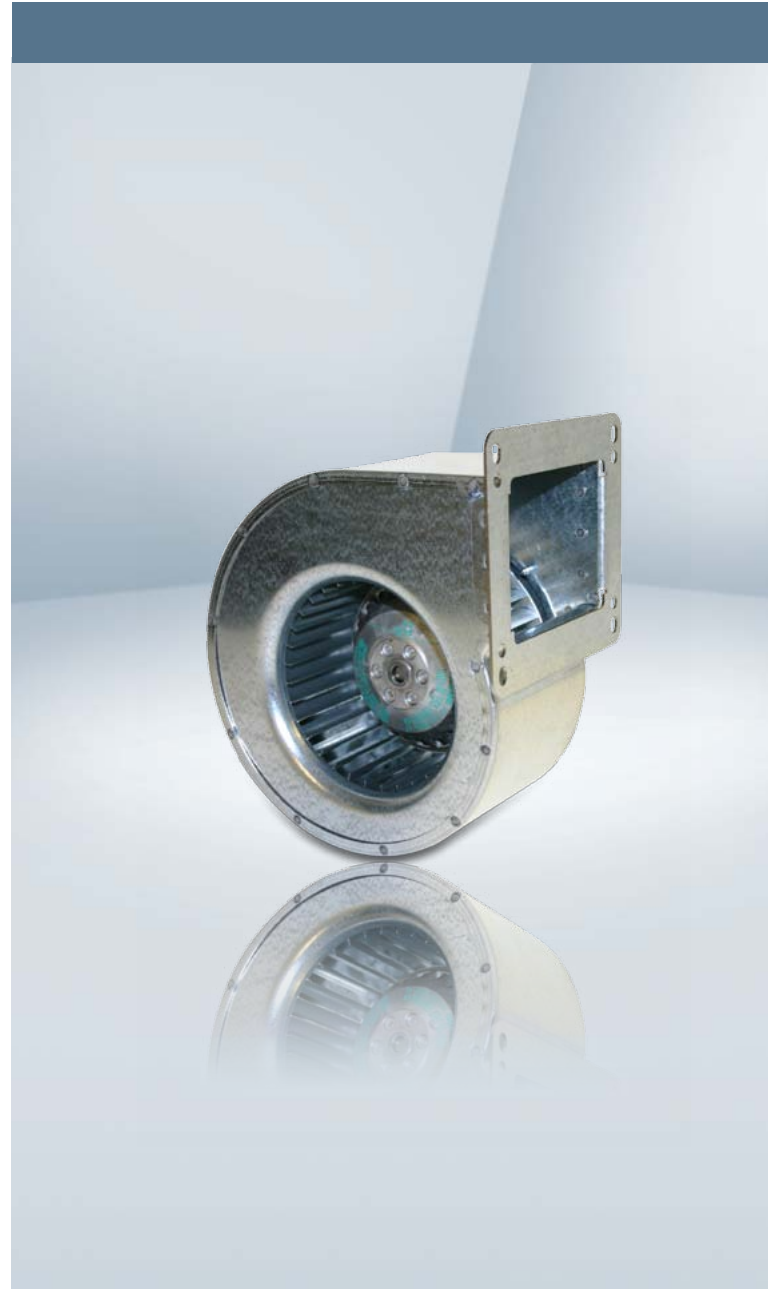
- » EE1G-115-180-04 – Use 16 μ F Capacitor 450-20-0029
- » EE1G-230-180-04 – Use 4 μ F Capacitor 99284-4-7320
- » EE1G-115-180-05 – Use 10 μ F Capacitor 99287-4-7320
- » EE1G-230-180-06 – Use 4 μ F Capacitor 99284-4-7320



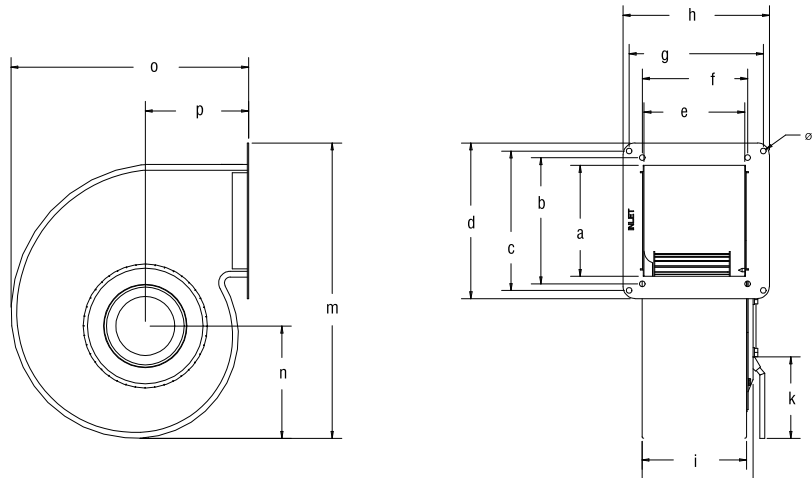
Capacitor 450-20-0029



Capacitor Series 9928X-4-7320

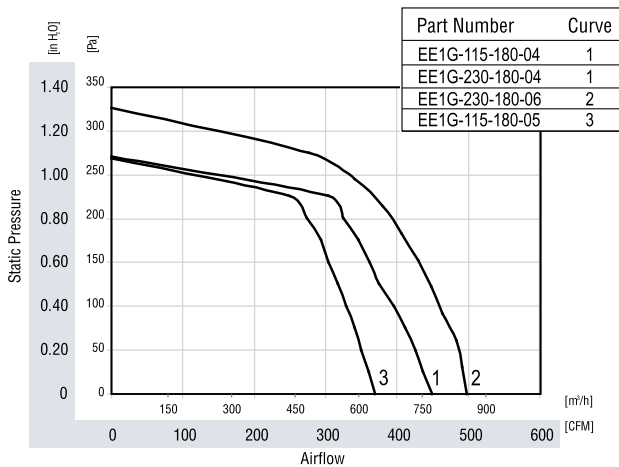


EE1G-XXX-180-XX



AC Blowers	a	b	c	d	e	f	g	h	i	j	k	l	m	n	o	p
Type	Inches [mm]															
EE1G-115-180-04	4.38	5.00	5.13	6.38	4.50	4.63	5.63	6.69	4.96	5.26	18.13	0.25	11.88	4.72	10.22	4.91
	[111]	[127]	[130]	[162]	[114]	[117]	[143]	[170]	[126]	[134]	[461]	[6]	[302]	[120]	[260]	[125]
EE1G-230-180-04	4.38	5.00	5.13	6.38	4.50	4.63	5.63	6.69	4.96	5.26	18.13	0.25	11.88	4.72	10.22	4.91
	[111]	[127]	[130]	[162]	[114]	[117]	[143]	[170]	[126]	[134]	[461]	[6]	[302]	[120]	[260]	[125]
EE1G-230-180-06	5.27	6.00	6.63	7.40	4.79	5.00	6.38	6.96	4.96	5.27	18.51	0.27	14.04	5.34	11.28	4.91
	[134]	[152]	[168]	[188]	[122]	[127]	[162]	[177]	[126]	[134]	[470]	[7]	[357]	[136]	[287]	[125]
EE1G-115-180-05	4.25	5.00	-	5.51	4.00	4.50	-	5.51	4.33	4.40	17.72	0.25	11.50	4.27	10.22	4.91
	[108]	[127]	-	[140]	[101]	[114]	-	[140]	[110]	[112]	[450]	[6]	[292]	[120]	[260]	[125]

Curves



Wiring Diagram

A. PSC "Type E" Motor

